



# Unboxing

## G2 Splice Cassete

COMMSCOPE®

Conectar Distribuidor Autorizado de COMMSCOPE® NETCONNECT®

[www.conectar.com.co](http://www.conectar.com.co)

## G2 solutions



360G2 Cartridge 12-LC-LS-AQ



360G2 Cartridge 12-LCA-SM-GR



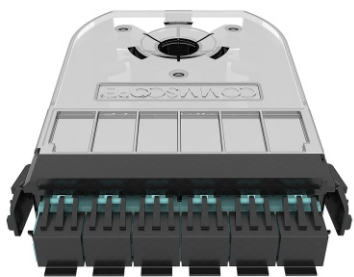
360G2 Cartridge 12-LC-SM-BL

Material ID	Product code	Description	Availability
<b>G2 splice cassettes</b>			
760109256	360G2 Cassette 12-LC-LS-AQ	360G2 cassette 12 LC multimode OM4, aqua	All Sub-Regions
760109272	360G2 Cassette 12-LC-SM-BL	360G2 cassette 12 LC singlemode, blue	All Sub-Regions
760109280	360G2 Cassette 12-LCA-SM-GR	360G2 cassette 12 LC angled singlemode, green	All Sub-Regions
760109298	360G2 Cassette 6-SC-LS-AQ	360G2 cassette 6 SC multimode OM4, aqua	All Sub-Regions
760109314	360G2 Cassette 6-SC-SM-BL	360G2 cassette 6 SC singlemode, blue	All Sub-Regions
760109322	360G2 Cassette 6-SCA-SM-GR	360G2 cassette 6 SC angled singlemode, green	All Sub-Regions
760245494	G2-SP-24LC	G2 splice cassette, 24LC, no pigtails	All Sub-Regions
760245495	G2-SP-12LC	G2 splice cassette, 12LC, no pigtails	All Sub-Regions
760245496	G2-SP-12SC	G2 splice cassette, 12SC, no pigtails	All Sub-Regions



G2-SP-12LCX-PT

Material ID	Product code	Description	Availability
<b>G2 pigtail cassettes</b>			
760109470	360G2 Cassette 12-LC-LS-AQ-Pigtails	360G2 cassette 12 LC multimode, aqua with pigtails	All Sub-Regions
760109496	360G2 Cassette 12-LC-SM-BL-Pigtails	360G2 cassette 12 LC singlemode, blue with pigtails	All Sub-Regions
760109504	360G2 Cassette 12-LCA-SM-GR-Pigtails	360G2 cassette 12 LC angled singlemode, green with pigtails	All Sub-Regions
760109512	360G2 Cassette 6-SC-LS-AQ-Pigtails A	360G2 cassette 6 SC multimode, aqua with pigtails A	All Sub-Regions
760109520	360G2 Cassette 6-SC-LS-AQ-Pigtails B	360G2 cassette 6 SC multimode, aqua with pigtails B	All Sub-Regions
760109553	360G2 Cassette 6-SC-SM-BL-Pigtails A	360G2 cassette 6 SC singlemode, blue with pigtails A	All Sub-Regions
760109561	360G2 Cassette 6-SC-SM-BL-Pigtails B	360G2 cassette 6 SC singlemode, blue with pigtails B	All Sub-Regions
760109579	360G2 Cassette 6-SCA-SM-GR-Pigtails A	360G2 cassette 6 SC angled singlemode, green with pigtails A	All Sub-Regions
760109587	360G2 Cassette 6-SCA-SM-GR-Pigtails B	360G2 cassette 6 SC angled singlemode, green with pigtails B	All Sub-Regions
760244927	G2-SP-24LCX-PT	G2 splice cassette, 24LC, OM4, with pigtails	All Sub-Regions
760244929	G2-SP-24LCG-PT	G2 splice cassette, 24LC, OS2, with pigtails	All Sub-Regions
760245398	G2-SP-24LCV-PT	G2 splice cassette, 24LC, OM5, with pigtails	All Sub-Regions
760245961	G2-SP-24LAG-PT	G2 splice cassette, 24LC/APC, OS2, with pigtails	All Sub-Regions
760245399	G2-SP-12LCX-PT	G2 splice cassette, 12LC, OM4, with pigtails	All Sub-Regions
760245401	G2-SP-12LCG-PT	G2 splice cassette, 12LC, OS2, with pigtails	All Sub-Regions
760245403	G2-SP-12LCV-PT	G2 splice cassette, 12LC, OM5, with pigtails	All Sub-Regions
760245960	G2-SP-12LAG-PT	G2 splice cassette, 12LC/APC, OS2, with pigtails	All Sub-Regions



360G2 Multimode OM4 Fiber Cassette 12 LC no pigtails, iPatch Ready

## Product Classification

<b>Regional Availability</b>	Asia   Australia/New Zealand   EMEA   Latin America   North America
<b>Portfolio</b>	CommScope®
<b>Product Type</b>	Fiber cassette
<b>Product Series</b>	G2

## General Specifications

<b>Color, front</b>	Aqua
<b>Intelligence Type</b>	iPatch® ready
<b>Interface, front</b>	LC
<b>Shuttered</b>	No
<b>Total Ports, quantity, front</b>	12

## Dimensions

<b>Height</b>	25.908 mm   1.02 in
<b>Width</b>	94.996 mm   3.74 in
<b>Depth</b>	123.012 mm   4.843 in

## Optical Specifications

<b>Fiber Mode</b>	Multimode
-------------------	-----------

## Environmental Specifications

<b>Qualification Standards</b>	IEC 61753-1   TIA-568.3-D
<b>Safety Standard</b>	CE   CSA   UL

[www.conectar.com.co](http://www.conectar.com.co)

Page 1 of 2

# 760109256 | 360G2 Cartridge 12-LC-LS-AQ

---

## Packaging and Weights

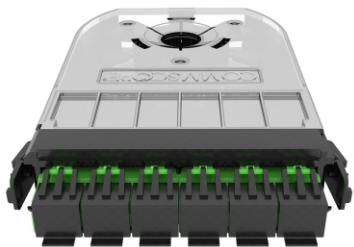
**Packaging quantity** 1  
**Weight, net** 0.071 kg | 0.157 lb

## Regulatory Compliance/Certifications

Agency	Classification
CHINA-ROHS	Below maximum concentration value
ISO 9001:2015	Designed, manufactured and/or distributed under this quality management system
REACH-SVHC	Compliant as per SVHC revision on <a href="http://www.commscope.com/ProductCompliance">www.commscope.com/ProductCompliance</a>
ROHS	Compliant



# 760109280 | 360G2 Cartridge 12-LCA-SM-GR



360G2 Singlemode Fiber Cassette 12 LC APC, no pigtails, iPatch Ready

## Product Classification

<b>Regional Availability</b>	Asia   Australia/New Zealand   EMEA   Latin America   North America
<b>Portfolio</b>	CommScope®
<b>Product Type</b>	Fiber cassette
<b>Product Series</b>	G2

## General Specifications

<b>Color, front</b>	Green
<b>Intelligence Type</b>	iPatch® ready
<b>Interface, front</b>	LC
<b>Shuttered</b>	No
<b>Total Ports, quantity, front</b>	12

## Dimensions

<b>Height</b>	25.908 mm   1.02 in
<b>Width</b>	94.996 mm   3.74 in
<b>Depth</b>	123.012 mm   4.843 in

## Optical Specifications

<b>Fiber Mode</b>	Singlemode
-------------------	------------

## Environmental Specifications

<b>Qualification Standards</b>	IEC 61753-1   TIA-568.3-D
<b>Safety Standard</b>	CE   CSA   UL

[www.conectar.com.co](http://www.conectar.com.co)

Page 1 of 2

# 760109280 | 360G2 Cartridge 12-LCA-SM-GR

---

## Packaging and Weights

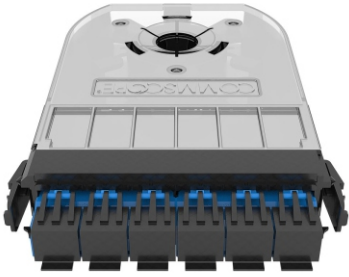
<b>Packaging quantity</b>	1
<b>Weight, net</b>	0.071 kg   0.157 lb

## Regulatory Compliance/Certifications

<b>Agency</b>	<b>Classification</b>
CHINA-ROHS	Below maximum concentration value
ISO 9001:2015	Designed, manufactured and/or distributed under this quality management system
REACH-SVHC	Compliant as per SVHC revision on <a href="http://www.commscope.com/ProductCompliance">www.commscope.com/ProductCompliance</a>
ROHS	Compliant



# 760109272 | 360G2 Cartridge 12-LC-SM-BL



360G2 Singlemode Fiber Cassette 12 LC, no pigtails, iPatch Ready

## Product Classification

<b>Regional Availability</b>	Asia   Australia/New Zealand   EMEA   Latin America   North America
<b>Portfolio</b>	CommScope®
<b>Product Type</b>	Fiber cassette
<b>Product Series</b>	G2

## General Specifications

<b>Color, front</b>	Blue
<b>Intelligence Type</b>	iPatch® ready
<b>Interface, front</b>	LC
<b>Shuttered</b>	No
<b>Total Ports, quantity, front</b>	12

## Dimensions

<b>Height</b>	25.908 mm   1.02 in
<b>Width</b>	94.996 mm   3.74 in
<b>Depth</b>	123.012 mm   4.843 in

## Optical Specifications

<b>Fiber Mode</b>	Singlemode
-------------------	------------

## Environmental Specifications

<b>Qualification Standards</b>	IEC 61753-1   TIA-568.3-D
<b>Safety Standard</b>	CE   CSA   UL

[www.conectar.com.co](http://www.conectar.com.co)

Page 1 of 2

# 760109272 | 360G2 Cartridge 12-LC-SM-BL

---

## Packaging and Weights

**Packaging quantity** 1  
**Weight, net** 0.071 kg | 0.157 lb

## Regulatory Compliance/Certifications

Agency	Classification
CHINA-ROHS	Below maximum concentration value
ISO 9001:2015	Designed, manufactured and/or distributed under this quality management system
REACH-SVHC	Compliant as per SVHC revision on <a href="http://www.commscope.com/ProductCompliance">www.commscope.com/ProductCompliance</a>
ROHS	Compliant





CommScope pushes the boundaries of communications technology with game-changing ideas and ground-breaking discoveries that spark profound human achievement.

We collaborate with our customers and partners to design, create and build the world's most advanced networks. It is our passion and commitment to identify the next opportunity and realize a better tomorrow. Discover more at [commscope.com](http://commscope.com)



**MEDELLÍN:**

PBX. (57) 4 444 2892

Cra 50 GG # 12 sur-116

**BOGOTÁ:**

Tel. (57) 1 256 0001 / 256 6682

Cra 69 B # 77- 45

[www.conectar.com.co](http://www.conectar.com.co)

**COMMSCOPE®**

---

[commscope.com](http://commscope.com)

Visit our website or contact your local CommScope representative for more information.

© 2020 CommScope, Inc. All rights reserved.

Unless otherwise noted, all trademarks identified by ® or ™ are registered trademarks, respectively, of CommScope, Inc. This document is for planning purposes only and is not intended to modify or supplement any specifications or warranties relating to CommScope products or services. CommScope is committed to the highest standards of business integrity and environmental sustainability with a number of CommScope's facilities across the globe certified in accordance with international standards, including ISO 9001, TL 9000, and ISO 14001. Further information regarding CommScope's commitment can be found at [www.commscope.com/About-Us/Corporate-Responsibility-and-Sustainability](http://www.commscope.com/About-Us/Corporate-Responsibility-and-Sustainability).

BR-114314-EN (04/20)